

NW Sec. 25, T. 13 N., R. 70 W.

CERTIFIED LAND CORNER RECORDATION

DESCRIPTION OF CORNER EVIDENCE FOUND, AND ORIGINAL RECORD (if known)

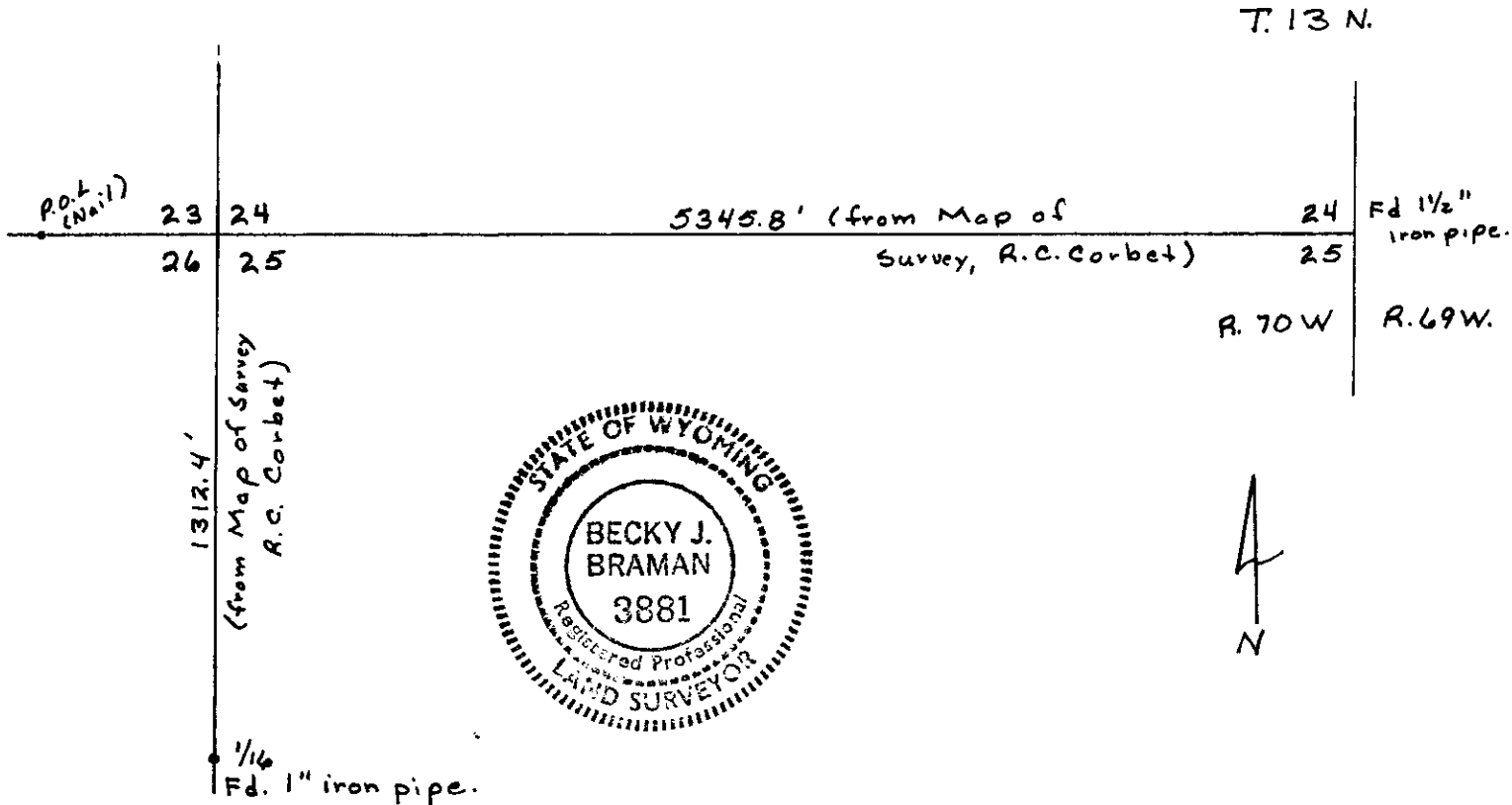
Found 6" x 8" x 8" high granite stone, chiseled with 2 notches on the South and 1 notch on the East. Set in rock mound with 1 1/2" iron pipe, loose, alongside.

23 24  
26 25  
Corner is on Saddleback Mountain.  
T. 13 N.  
R. 70 W.

DESCRIPTION OF MONUMENT AND ACCESSORIES ESTABLISHED TO PERPETUATE THE ORIGINAL LOCATION OF THIS CORNER:

Set lath and flagging. Corner was well-marked and well-set, no further perpetuation attempted.

SKETCH, WITH COURSE AND DISTANCE TO ADJACENT CORNER IF DETERMINED IN THIS SURVEY. (May Sketch or Paste Reproduction on Reverse Side.)



I, Becky J. Braman certify that I have carefully performed or reviewed the work done on the diagrammed corner as reported on this recordation form and approve the same.

Becky J. Braman Wyoming L.S. 3881  
Signature of Surveyor Registration No.

STATE OF WYOMING,  
Office of Clerk and Recorder,  
County of Taramie

718295

This "corner record" was filed for record on the OCT 12 1983 day of \_\_\_\_\_, 19\_\_\_\_, was noted on the cross-index plat and is assigned page No. \_\_\_\_\_, in book No. \_\_\_\_\_.

James C. Whitehead County Official

Cross Index No. _____	T. _____	R. _____	Mer. _____
_____	T. _____	R. _____	Mer. _____
_____	T. _____	R. _____	Mer. _____
_____	T. _____	R. _____	Mer. _____
_____	T. _____	R. _____	Mer. _____
_____	T. _____	R. _____	Mer. _____
_____	T. _____	R. _____	Mer. _____

①  
R-21